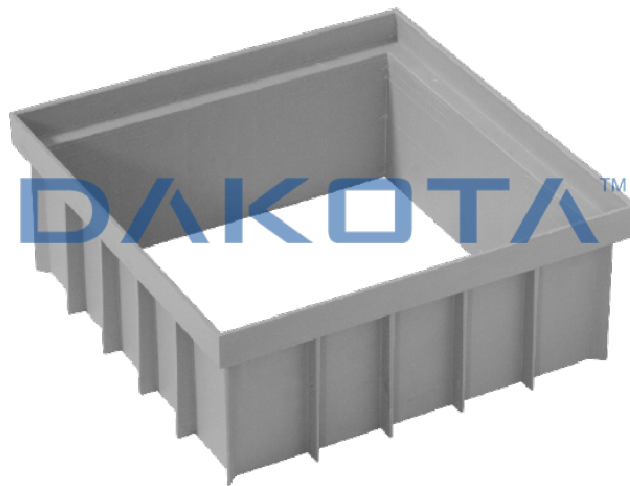


ACCESSORIES FOR CATCH-PIT



Description

Dakota's family of PP catchpits consists of a full range of accessories for wastewater management and installation: The Siphonated Plate is placed inside the catch-pit, along the grooves. It is available in various sizes: 200 x 200, 300 x 300, 400 x 400 and 550 x 550 mm in grey colour. The siphon plate is NOT compatible with SMART line of catch-pits. The bell siphon is an accessory applicable to all our catch-pits. Available in the dimensions of 300 x 300 and 400 x 400 mm in Grey Colour. The extension allows 10 cm extension of the catch pit's height. Available in the sizes of 200 x 200, 300 x 300, 400 x 400, 550 x 550 mm. Grey colour.

Material

All these accessories are made of PP (polupropylene)

Use

The Siphonated Plate is used to allow the siphoning of the catch-pit, thanks to the easy application system. The bell siphon is used to create a "siphon effect" inside the catch-pits. It is very easily to apply, to inspect and structured to prevent the emission of bad odors due the stagnation of water. Perfect matching with the grating catch-pit cover. The extension is put on the top of the catch-pit, in order to increase the height of 10 cm especially when it is installed in sloped surfaces.