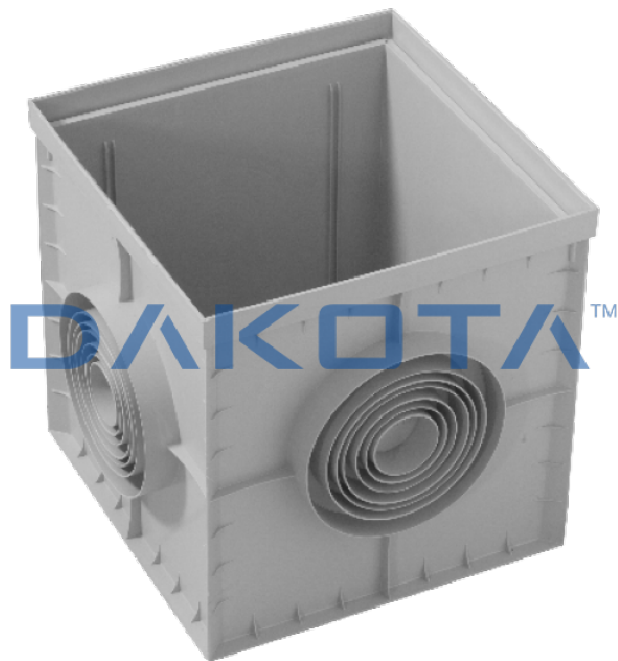


### CATCH PIT PLUS



Code	Commercial Description	Dimensions	Conf.	Pallet	Selling Unit
POZ01-1372	Catch Pit Plus	200 x 200 mm		150	PZ
POZ01-1372S	Catch Pit Plus Export	200 x 200 mm		240	PZ
POZ01-1372B	Catch Pit Plus	250 x 250 mm	0	144	PZ
POZ01-1373	Catch Pit Plus	300 x 300 mm		48	PZ

POZ01-1373S	Catch Pit Plus Export	300 x 300 mm		96	PZ
POZ01-1374	Catch Pit Plus	400 x 400 mm		18	PZ
POZ01-1374S	Catch Pit Plus Export	400 x 400 mm		36	PZ
POZ01-1371	Catch Pit Plus	550 x 550 mm	0	20	PZ
POZ01-1370	Seventy Catch Pit	700 x 700 mm		8	PZ
POZ01-1372V	Pozzetto Plus Verde	200 x 200 mm		150	PZ
POZ01-1372BV	Standard catch-pit -green	250 x 250 mm		144	PZ
POZ01-1373V	Pozzetto Standard Verde	300 x 300 mm		48	PZ
POZ01-1374V	Pozzetto Standard Verde	400 x 400 mm		18	PZ

## Description

The "Plus" drainage inspection chamber, also known as a catch basin or catch pit, is available in various sizes, from 200 x 200 to 550 x 550 mm, grey colour. Main characteristics: Light weight for a easy transport, positioning and installation, even by a single person; High resistance, thanks to the reinforcements and ribs on the sides; Pipes of every sizes can easily fit thanks to the special pre-cut concentric shape of the holes on the sides. Compatible with relative PP inspection chamber cover.

## Material

Made of PP (polypropylene).

## Use

It is used as an alternative to traditional concrete manhole.

## Accessories

Code	Commercial Description	Dimensions	Conf.	Pallet	Selling Unit
POZ06-1378	Siphonated Plate	200 x 200 mm		9000	PZ
POZ06-1379	Siphonated Plate	300 x 300 mm		2040	PZ
POZ06-1380	Siphonated Plate	400 x 400 mm		900	PZ
POZ06-1389	Siphonated Plate	550 x 550 mm	0	480	PZ
POZ07-6821N	Bell Siphon	300 x 300 mm		112	PZ
POZ07-6822N	Bell Siphon	400 x 400 mm	0	54	PZ
POZ05-1376	Catch Pit Extension 300 x 300mm, h.100mm	300 x 300 mm		120	PZ
POZ05-1377	Catch Pit Extension 400 x 400mm, h.100mm	400 x 400 mm	0	60	PZ
POZ05-1377B	Catch Pit Extension 550 x 550mm, h.130mm	550 x 550 mm		44	PZ

