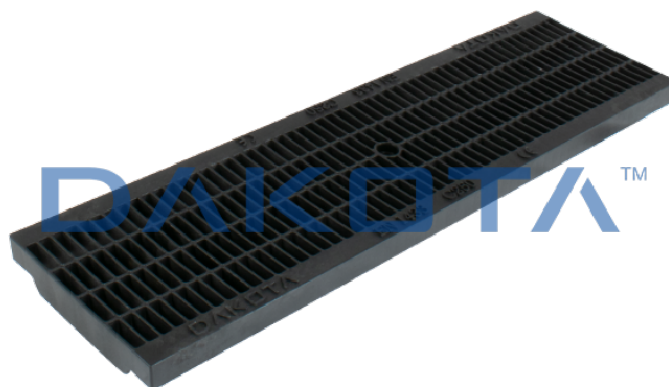


TECHNICAL POLYMER MONOLITHIC GRATING 130 CLASS C250



Code	Commercial Description	Dimensions	Conf.	Pallet	Selling Unit
POZ90-1952	Technical polimer monolithic grating 130 class C25...	500x130x20		540	PZ

Description

Heel proof grating, dimension 500 x 130 mm.load class: C250, CE marked according to EN 1433.LOCKING SYSTEM: The grating can be matched with Block-system Skat only (only with Pegasus Plus 130x120 and Taurus 130x150)

Material

Made of Technical polymer.

Use

It can be used in areas that need high load capacity (heavy traffic and/or heavy vehicles passage, respecting the corresponding loading class).