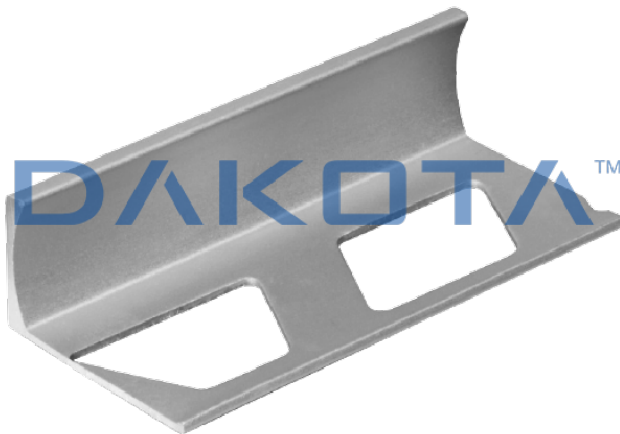


"L" SHAPED ALUMINUM SILVER PROFILE



| Code | Commercial Description | Dimensions | Conf. | Pallet | Selling Unit |
|--------------|------------------------------------|--------------------|-------|--------|--------------|
| PRO10-1902 | "L" shaped aluminum silver profile | h. 8,0 x 2.700 mm | 54 | 2700 | M |
| PRO10-1903 | "L" shaped aluminum silver profile | h. 10,0 x 2.700 mm | 54 | 2700 | M |
| PRO20-2063SP | "L" shaped satinized profile | h. 8,0 x 2.700 | 54 | 2700 | 0 |
| PRO20-2064S | Aluminium profile Satin finish | h. 12,0 x 2.600 mm | 52 | 3900 | 0 |

Description

"L" shaped straight edge tile trim used in floor tiling. Available in height 8mm or 10mm. Single shrink packaged inside a PVC tube. The barcode is shown both on the profile and on the tube (on the profile and on the cap).

Material

Made of aluminum silver.

Use

Used to define angles in tile covering.

