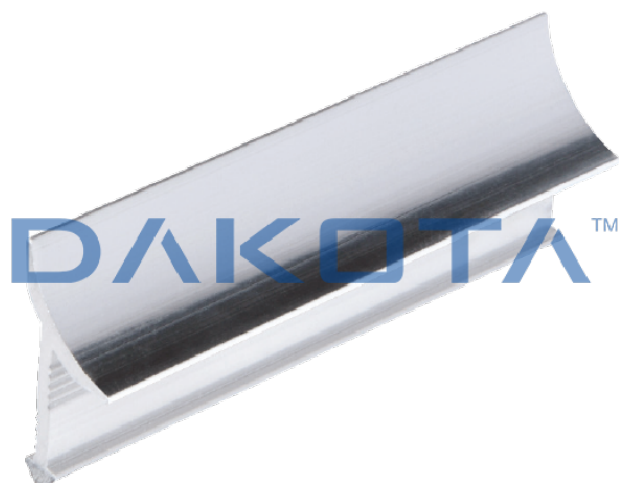


# SATIN OR POLISHED ALUMINUM INTERNAL CORNER PROFILE



| Code        | Commercial Description                     | Dimensions         | Conf. | Pallet | Selling Unit |
|-------------|--|--------------------|-------|--------|--------------|
| PRO20-2029L | Polished Aluminum Internal Corner Profile  | h. 10,0 x 2.500 mm | 50    | 2500   | M            |
| PRO20-2029S | Satinized Aluminum Internal Corner Profile | h. 10,0 x 2.500 mm | 50    | 2500   | M            |

### Description

Concave section profile to be positioned in correspondence of the fitting-coating tiled floor. Available in height 10 mm. Single shrink packaged inside a PVC tube. The barcode is shown both on the profile and on the tube (on the profile and on the cap).

### Material

Made of polished aluminum and brushed aluminum.

### Use

Used in the junction between wall and floor tiled to form a rounded corner for easy cleaning.