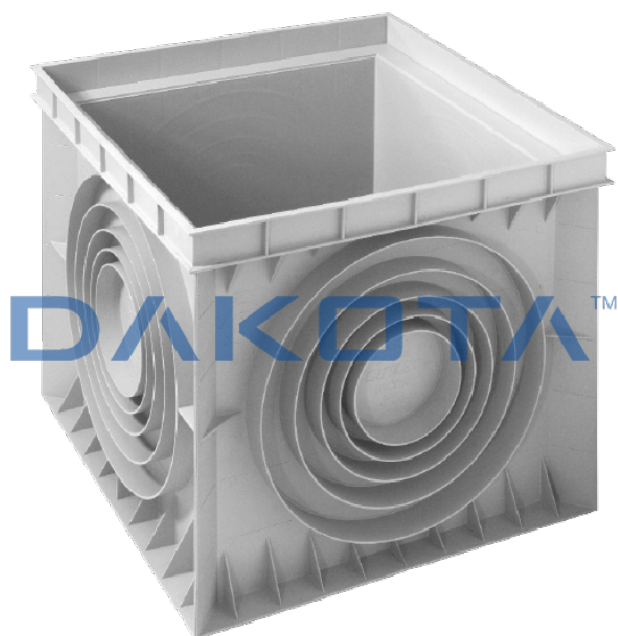


SEVENTY CATCH PIT



Code	Commercial Description	Dimensions	Conf.	Pallet	Selling Unit
POZ01-1370	Seventy Catch Pit	700 x 700 mm		8	PZ

Description

The "Seventy" drainage inspection chamber, also known as a catch basin or catch pit, is available in dimension 735 x 735 x 650 mm. The internal dimensions are 600 x 600 mm. Main characteristics: Light weight for an easy transport, positioning and installation, even by a single person (<25 kg); High resistance, thanks to the reinforcements and ribs on the sides; Pipes of every sizes can easily fit thanks to the special pre-cut concentric shape of the holes on the sides. Misaligned inserts for the attack of the pipes from 1" to 2"; Precutted bottom, ready to be removed and overlap with another one (including the possibility of horizontal cut every 10 cm). Compatible with its own specific cover in either cast iron or plastic.

Material

Made of PP (polypropylene).

Use

Used as a excellent alternative to traditional concrete catch-pits and particularly suitable for housing hydraulic devices and/or electrical installations for grounding.

Accessories

Code	Commercial Description	Dimensions	Conf.	Pallet	Selling Unit
POZ02-7070M	Cover for Seventy With Double handle	700 x 700 mm		30	PZ
POZ02-7070MV	Green Cover for Seventy With Double Handle	700 x 700 mm		30	PZ
POZ04-7070TV	Green Frame for Seventy Catch-Pit	840 x 840 x 75		19	PZ
POZ04-7070T	Grey Frame for Seventy Cover	700 x 700 mm		19	PZ

