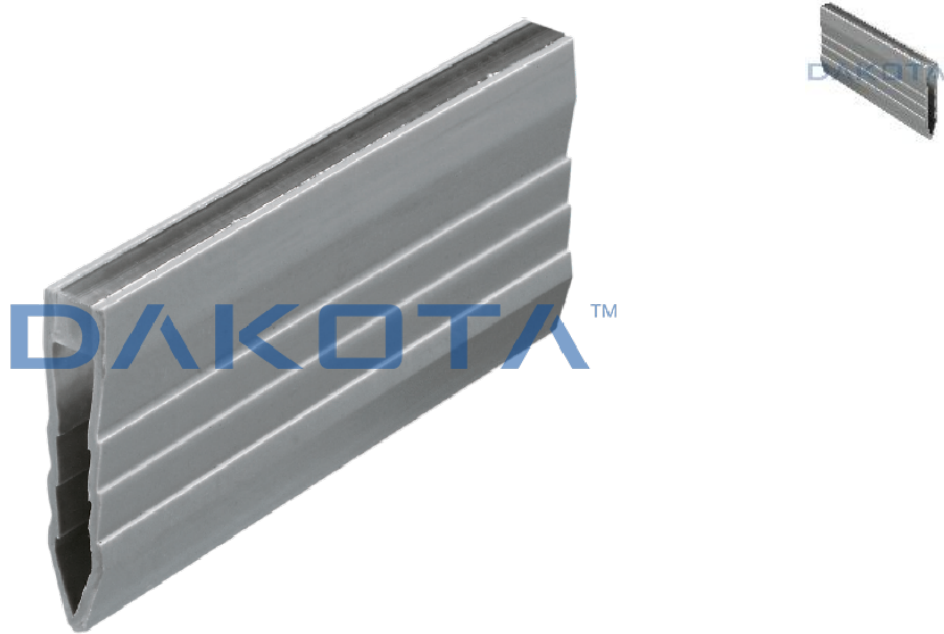


SILICONE FISHBONE SHAPE JUNCTION



Code	Commercial Description	Dimensions	Conf.	Pallet	Selling Unit
PRO16-55M25	Silicone fishbone shape junction	d 8,0 x h 25,0 mm	100	40	CF
PRO16-55M35	Silicone fishbone shape junction	d 8,0 x h 35,0 mm	100	30	CF
PRO16-55M50/50	Silicone fishbone shape junction	d 8,0 x h 45,0 mm	50	30	CF
PRO16-55M50		50X8	100	0	0

Description

Broaden fishbone shaped profiles for floor-tiling. Available in sizes (width x height) 8 x 25, 8 x 35, 8 x 50 mm packaged in bundles of 100 m.

Material

Made of PP (polypropylene) and silicone.

Use

Used as expansion joint, thus avoiding fissure and/or cracks in floors laid with glue due to stress, subsidence and thermal shock. We suggest to use 20-30/sqm junction for internal use and 10-15/sqm junction for external use. Laying with mortar.