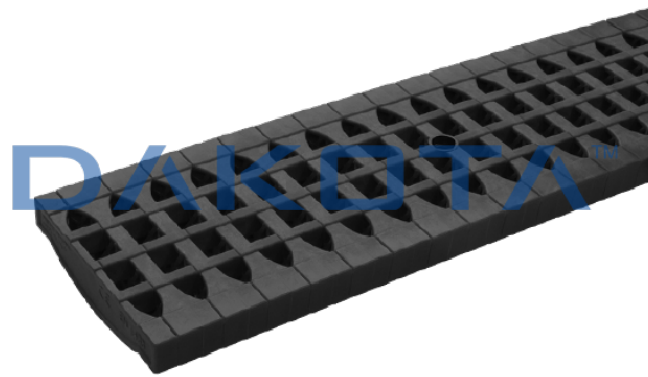


TECHNOPOLYMER 130 GRID - CLASS C250



Code	Commercial Description	Dimensions	Conf.	Pallet	Selling Unit
POZ90-1852	Technical Polimer Modular Grating 130 Class C250	130 x 500 x 20		442	

Description

Grid made of technopolymers with a square mesh size of 130 x 500 x 20 mm. is available in load classes B125 and C250 as per EN1433.

Material

Made of technopolymer.

Use

Used in any domestic and/or public driveway context.